

# QuickStart

## Installing and Using VPN for Macintosh and Windows

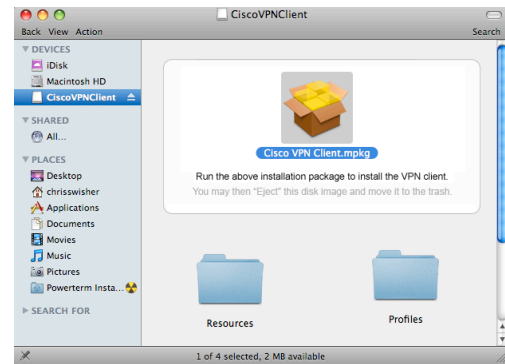
Virtual Private Network, or VPN, is security software used primarily to connect to the Franklin & Marshall wireless network. This software is required to access the wireless network on campus. VPN is also used to access some Library resources from off-campus. Additionally, VPN provides security for the data transmitted over the network and prevents unauthorized users from accessing the network.

### VPN Installation:

Log onto the Software Server at <http://software.fandm.edu> with a web browser while connected to the wired network.

Under "Core Software," click the VPN link appropriate for your operating system. **If you have VPN software from a different source, it will not work on the F&M network.**

The VPN installer will be copied to your desktop. Double-click the installer icon in the window that appears. If you do not see a window appear, double-click the "fandm-osx-vpn...dmg" icon on your desktop. (Or, if you're using Windows, double click the .exe file that you just downloaded.)



Follow the instructions as VPN prepares to install onto your computer. If the installer asks for your username and password, this is NOT your unified F&M password. This is the password for your user account on your computer.

When VPN is finished installing, you may have to restart your computer. After this, be sure that you are connected to the wireless network named "Wireless FandM."

### To use VPN to connect to F&M's wireless network:

All of the settings (except your username and password) are pre-configured. You will have two Connection Entry choices. Use fandm-wireless if you are on campus and intend to connect to the internet wirelessly.

Join the the WiFi network **Wireless FandM** your wireless connection must be enabled and functioning properly in order to make a connection.

Run the VPN Client application, found in the Applications folder.

Select "fandm-wireless" from the list and click the "Connect" button.

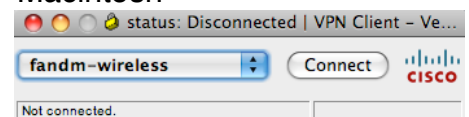
Enter your F&M short name and password.

The VPN window will minimize if it successfully connects. You can now access F&M's wireless network.

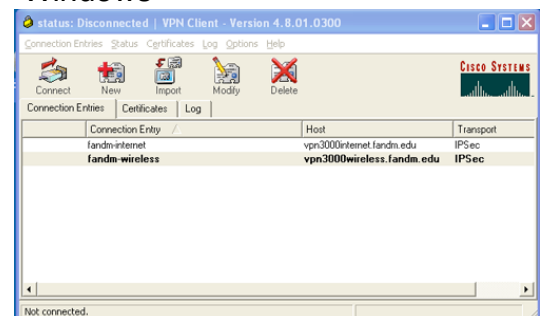
When you are finished using the wireless network, click on the VPN icon at the bottom of your screen and disconnect. Be sure to do this before moving your computer or putting it to sleep.

VPN will disconnect if your computer is put to sleep or shut down or if your portable computer is closed.

### Macintosh

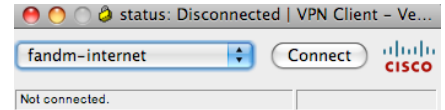


### Windows



## To use VPN to connect to F&M's network from off-campus:

You can also use VPN to simulate an on-campus network connection while you are off campus. This will allow access to the library's subscription-based journals and services and can sometimes improve the speed and reliability of services like eDisk. To do this, be sure that you have a valid internet connection, and follow steps the above. Select "fandm-internet" instead of "fandm-wireless."



For further assistance, see other ITS@F&M Quickstarts, click the Zimbra **Help** button, or contact the ITS by email at [helpdesk@fandm.edu](mailto:helpdesk@fandm.edu) or by phone at 358-4483.